



5. T- / Kreuz-Stücke

Tees / Cross pieces

		Seite page
5.1	STERI-T® / HQ-T® DIN 11865-T Steril T-Stück -lang/egal- aseptic tee -long/equal-	109
5.2	STERI-TK® / HQ-TK® DIN 11865-TK Steril T-Stück -kurz/egal- aseptic tee -short/equal-	111
5.3	STERI-TR® / HQ-TR® DIN 11865-T Steril T-Stück -lang/reduziert- aseptic tee -long/reduced-	113
5.4	STERI-TKR® / HQ-TKR® DIN 11865-TK Steril T-Stück -kurz/reduziert- aseptic tee -short/reduced-	118
5.5	MEDI-T® DIN 11852-TS Hygiene T-Stück -lang/egal- hygienic tee -long/equal-	122
5.6	MEDI-TK® DIN 11852-TK Hygiene T-Stück -kurz/egal- hygienic tee -short/equal-	124
5.7	STERI-Cross® / HQ-Cross® Steril Kreuz-Stück -lang/egal- aseptic cross piece -long/equal-	126
5.8	STERI-Cross® K / HQ-Cross® K Steril Kreuz-Stück -kurz/egal- aseptic cross piece -short/equal-	128



5.1 STERI-T® / HQ-T® DIN 11865-T

Steril T-Stück -lang/egal-

aseptic tee -long/equal-

Legende

- A Außendurchmesser
- B Innendurchmesser
- C Gesamtlänge
- C/2 Länge Abgang

Abmessungen

- DIN 11866-A (DIN 11850)
- DIN 11866-B (EN ISO 1127)
- DIN 11866-C (ASME BPE)

Normative Verweisungen, Anforderungen / Abnahmen (Vormaterial)

- DIN 11865
- DIN 11866
- BN2
- EN 10088-1
- EN 10204
- ASTM A269 / A270
- ASME BPE
- ASME SA249/SA249M
- AD 2000-W2

Kennzeichnung

Hersteller, Werkstoff, Abmessung, Schmelze, DIN 11865

Toleranzen (Bezugsnorm)

DIN 11865 / EN ISO 1127

Verpackung

Schweißenden mit Kunststoffkappen verschlossen, einzeln verpackt.

Werkstoffe

1.4435

weitere Werkstoffe auf Anfrage

Oberflächenbeschaffenheit

	STERI-line MB H2 Ra > 0.8 µm	K400 H3o Ra < 0.8 µm	e-pol. HE3o Ra < 0.5-0.8 µm
innen metallblank			
innen geschliffen			
innen e-polieret			
außen metallblank			
außen geschliffen			

Key

- external diameter
- internal diameter
- total length
- length of the branch

Dimensions

- DIN 11866-A (DIN 11850)
- DIN 11866-B (EN ISO 1127)
- DIN 11866-C (ASME BPE)

Normative References, Requirements / Approvals (raw material)

- DIN 11865
- DIN 11866
- BN2
- EN 10088-1
- EN 10204
- ASTM A269 / A270
- ASME BPE
- ASME SA249/SA249M
- AD 2000-W2

Marking

manufacturer, material, dimension, heat, DIN 11865

Tolerances (reference standard)

DIN 11865 / EN ISO 1127

Packaging

Welding ends covered with plastic caps, wrapped separately.

Materials

316L

further materials on request

Surface condition

	HQ-line K400 H4o Ra < 0.4 µm	e-pol. HE5o Ra < 0.25 µm
inside bright finish		
inside mech. polished		
inside e-polished		
outside bright finish		
outside mech. polished		

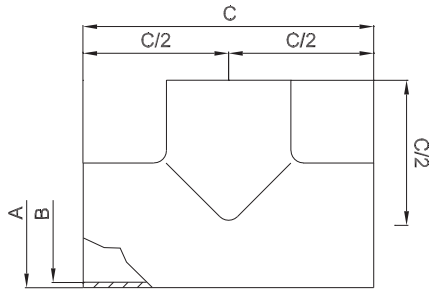


Oberflächenqualitäten | surface qualities

Innenoberfläche internal surface finish	(Zusatz-) Artikel-Nr. (additional) order No
Ra < 0.6 µm (STERI-line®)	999279
Ra < 0.5 µm (STERI-line®)	999280
Ra < 0.4 µm (HQ-line®)	999281
Ra < 0.25 µm (HQ-line®)	999283

Bestellbeispiel | ordering example

Artikelbezeichnung + Ausführungen article description + variants	Artikel-Nr. order No
STERI-T® DN025 ISO (1.4435) DIN 11865-T aseptic tee -long/equal-	701227
e-polieret e-polished	
Ra < 0.8 µm	



weitere Abmessungen auf Anfrage | further dimensions on request

DIN	Abmessung dimension	A	B	C	C/2	STERI-line®			HQ-line®	
						MB	K400	e-pol.	K400	e-pol.
DN004*	6.0 x 1.0	6.0	4.0	60.0	30.0	703819	711290	711291	711098	711101
DN006	8.0 x 1.0	8.0	6.0	60.0	30.0	700521	701240	701241	711099	711102
DN008	10.0 x 1.0	10.0	8.0	60.0	30.0	705208	705209	705210	711100	711103
DN010*	12.0 x 1.0	12.0	10.0	70.0	35.0	700505	701208	701209	707018	707019
DN010	13.0 x 1.5	13.0	10.0	70.0	35.0	705380	705383	705384	707020	707021
DN015	19.0 x 1.5	19.0	16.0	70.0	35.0	700509	701216	701217	707022	707023
DN020	23.0 x 1.5	23.0	20.0	80.0	40.0	700511	701220	701221	707024	707025
DN025	29.0 x 1.5	29.0	26.0	100.0	50.0	700513	701224	701225	707026	707027
DN032	35.0 x 1.5	35.0	32.0	110.0	55.0	700515	701228	701229	707028	707029
DN040	41.0 x 1.5	41.0	38.0	120.0	60.0	700517	701232	701233	707030	707031
DN050	53.0 x 1.5	53.0	50.0	160.0	80.0	700519	701236	701237	707032	707033
DN065	70.0 x 2.0	70.0	66.0	210.0	105.0	700522	701242	701243	707034	707035
DN080	85.0 x 2.0	85.0	81.0	260.0	130.0	700525	701248	701249	707036	707037
DN100	104.0 x 2.0	104.0	100.0	310.0	155.0	700507	701212	701213	707038	707039
DN125	129.0 x 2.0	129.0	125.0	375.0	187.5	702177	702178	702179	**	**
DN150	154.0 x 2.0	154.0	150.0	450.0	225.0	702189	702190	702191	**	**
DN200	204.0 x 2.0	204.0	200.0	600.0	300.0	711292	711293	711294	**	**

ISO	Abmessung dimension	A	B	C	C/2	STERI-line®			HQ-line®	
						MB	K400	e-pol.	K400	e-pol.
DN008	13.5 x 1.6	13.5	10.3	64.0	32.0	700524	701246	701247	707040	706464
DN010	17.2 x 1.6	17.2	14.0	68.0	34.0	700506	701210	701211	707041	707042
DN015	21.3 x 1.6	21.3	18.1	72.0	36.0	700510	701218	701219	707043	707044
DN020	26.9 x 1.6	26.9	23.7	110.0	55.0	700512	701222	701223	707045	707046
DN025	33.7 x 2.0	33.7	29.7	120.0	60.0	700514	701226	701227	707047	707048
DN032	42.4 x 2.0	42.4	38.4	130.0	65.0	700516	701230	701231	707049	707050
DN040	48.3 x 2.0	48.3	44.3	130.0	65.0	700518	701234	701235	707051	707052
DN050	60.3 x 2.0	60.3	56.3	180.0	90.0	700520	701238	701239	707053	707054
DN065	76.1 x 2.0	76.1	72.1	220.0	110.0	700523	701244	701245	707055	707056
DN080	88.9 x 2.3	88.9	84.3	260.0	130.0	700526	701250	701251	707057	707058
DN100	114.3 x 2.3	114.3	109.7	320.0	160.0	702184	702199	701215	707059	707060
DN125	139.7 x 2.6	139.7	134.5	400.0	200.0	700508	702180	702181	**	**
DN150	168.3 x 2.6	168.3	163.1	500.0	250.0	702192	701214	702193	**	**
DN200	219.1 x 2.6	219.1	213.9	600.0	300.0	**	**	**	**	**

ASME BPE	Abmessung dimension	A	B	C	C/2	STERI-line®			HQ-line®	
						MB	K400	e-pol.	K400	e-pol.
DN ¼"	6.35 x 0.89	6.35	4.57	89.0	44.5	708999	711295	711296	711303	711304
DN ⅜"	9.53 x 0.89	9.53	7.75	89.0	44.5	711297	711298	711299	711305	711306
DN ½"	12.7 x 1.65	12.7	9.4	95.2	47.6	702592	704995	705003	707061	707062
DN ¾"	19.05 x 1.65	19.05	15.75	101.6	50.8	702593	704996	705004	707063	707064
DN 1"	25.4 x 1.65	25.4	22.1	108.0	54.0	702594	704997	705005	707065	707066
DN 1½"	38.1 x 1.65	38.1	34.8	120.6	60.3	702595	704998	705006	707067	707068
DN 2"	50.8 x 1.65	50.8	47.5	146.0	73.0	702596	704999	705007	707069	707070
DN 2½"	63.5 x 1.65	63.5	60.2	158.8	79.4	702597	705000	705008	707071	707072
DN 3"	76.2 x 1.65	76.2	72.9	171.4	85.7	702598	705001	705009	707073	707074
DN 4"	101.6 x 2.11	101.6	97.38	209.6	104.8	704994	705002	705010	707075	707076
DN 6"	152.4 x 2.77	152.4	146.86	285.8	142.9	711300	711301	711302	711307	711308

*) nicht in der DIN-Norm enthalten | non-standard

***) auf Anfrage | on request



5.2 STERI-TK® / HQ-TK® DIN 11865-TK

Steril T-Stück -kurz/egal-

aseptic tee -short/equal-

Legende

- A Außendurchmesser
- B Innendurchmesser
- C Gesamtlänge
- D Länge Abgang

Abmessungen

- DIN 11866-A (DIN 11850)
- DIN 11866-B (EN ISO 1127)
- DIN 11866-C (ASME BPE)

Normative Verweisungen, Anforderungen / Abnahmen (Vormaterial)

- DIN 11865
- DIN 11866
- BN2
- EN 10088-1
- EN 10204
- ASTM A269 / A270
- ASME BPE
- ASME SA249/SA249M
- AD 2000-W2

Kennzeichnung

Hersteller, Werkstoff, Abmessung, Schmelze, DIN 11865

Toleranzen (Bezugsnorm)

DIN 11865 / EN ISO 1127

Verpackung









Schweißenden mit Kunststoffkappen verschlossen, einzeln verpackt.

Werkstoffe

1.4435

weitere Werkstoffe auf Anfrage

Oberflächenbeschaffenheit

		MB H2 Ra > 0.8 µm	K400 H3o Ra < 0.8 µm	e-pol. HE3o Ra < 0.5-0.8 µm
innen metallblank				
innen geschliffen				
innen e-polier				
außen metallblank				
außen geschliffen				

Key

- external diameter
- internal diameter
- total length
- length of the branch

Dimensions

- DIN 11866-A (DIN 11850)
- DIN 11866-B (EN ISO 1127)
- DIN 11866-C (ASME BPE)

Normative References, Requirements / Approvals (raw material)

- DIN 11865
- DIN 11866
- BN2
- EN 10088-1
- EN 10204
- ASTM A269 / A270
- ASME BPE
- ASME SA249/SA249M
- AD 2000-W2

Marking

manufacturer, material, dimension, heat, DIN 11865

Tolerances (reference standard)

DIN 11865 / EN ISO 1127

Packaging







Welding ends covered with plastic caps, wrapped separately.

Materials

316L

further materials on request

Surface condition

		K400 H4o Ra < 0.4 µm	e-pol. HE5o Ra < 0.25 µm
inside bright finish			
inside mech. polished			
inside e-polished			
outside bright finish			
outside mech. polished			

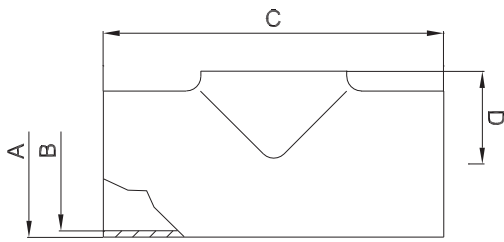


Oberflächenqualitäten | surface qualities

Innenoberfläche internal surface finish	(Zusatz-) Artikel-Nr. (additional) order No
Ra < 0.6 µm (STERI-line®)	999279
Ra < 0.5 µm (STERI-line®)	999280
Ra < 0.4 µm (HQ-line®)	999281
Ra < 0.25 µm (HQ-line®)	999283

Bestellbeispiel | ordering example

Artikelbezeichnung + Ausführungen article description + variants	Artikel-Nr. order No
HQ-TK® DN025 ISO (1.4435) DIN 11865-TK aseptic tee -short/equal-	707104
geschliffen K400 mech. polished	
Ra < 0.4 µm	



weitere Abmessungen auf Anfrage | further dimensions on request

DIN	Abmessung dimension	A	B	C	D	STERI-line®			HQ-line®	
						MB	K400	e-pol.	K400	e-pol.
DN010*	12.0 x 1.0	12.0	10.0	70.0	7.5	706878	708125	708135	707078	707079
DN010	13.0 x 1.5	XXX	XXX	XXX	XXX	XXX	XXX	XXX	XXX	XXX
DN015	19.0 x 1.5	19.0	16.0	70.0	11.0	702703	708126	708136	707080	707081
DN020	23.0 x 1.5	23.0	20.0	80.0	13.0	702705	708127	708137	707082	707083
DN025	29.0 x 1.5	29.0	26.0	100.0	16.0	702707	708128	708138	707084	707085
DN032	35.0 x 1.5	35.0	32.0	110.0	19.5	702709	708129	708139	707086	707087
DN040	41.0 x 1.5	41.0	38.0	120.0	23.0	702711	708130	708140	707088	707089
DN050	53.0 x 1.5	53.0	50.0	160.0	30.0	702713	708131	708141	707090	707091
DN065	70.0 x 2.0	70.0	66.0	210.0	40.0	702715	708132	708142	707092	707093
DN080	85.0 x 2.0	85.0	81.0	260.0	47.5	702717	708133	708143	707094	707095
DN100	104.0 x 2.0	104.0	100.0	310.0	58.0	702719	708134	708144	707096	707097
DN125	129.0 x 2.0	129.0	125.0	375.0	74.0	702721	711310	711311	**	**
DN150	154.0 x 2.0	154.0	150.0	450.0	90.0	702723	711312	711313	**	**
DN200	204.0 x 2.0	204.0	200.0	600.0	115.0	711314	711315	711316	**	**

ISO	Abmessung dimension	A	B	C	D	STERI-line®			HQ-line®	
						MB	K400	e-pol.	K400	e-pol.
DN008	13.5 x 1.6	XXX	XXX	XXX	XXX	XXX	XXX	XXX	XXX	XXX
DN010	17.2 x 1.6	17.2	14.0	68.0	10.1	702702	708145	708155	707098	707099
DN015	21.3 x 1.6	21.3	18.1	72.0	12.2	702704	708146	708156	707100	707101
DN020	26.9 x 1.6	26.9	23.7	110.0	15.0	702706	708147	708157	707102	707103
DN025	33.7 x 2.0	33.7	29.7	120.0	18.4	702708	708148	708158	707104	707105
DN032	42.4 x 2.0	42.4	38.4	130.0	23.2	702710	708149	708159	707106	707107
DN040	48.3 x 2.0	48.3	44.3	130.0	26.7	702712	708150	708160	707108	707109
DN050	60.3 x 2.0	60.3	56.3	180.0	33.7	702714	708151	708161	707110	707111
DN065	76.1 x 2.0	76.1	72.1	220.0	43.1	702716	708152	708162	707112	707113
DN080	88.9 x 2.3	88.9	84.3	260.0	49.5	702718	708153	708163	707114	707115
DN100	114.3 x 2.3	114.3	109.7	320.0	63.2	702720	708154	708164	707116	707117
DN125	139.7 x 2.6	139.7	134.5	400.0	79.9	702722	711317	708992	**	**
DN150	168.3 x 2.6	168.3	163.1	500.0	97.2	702724	711318	711319	**	**
DN200	219.1 x 2.6	219.1	213.9	600.0	123.6	**	**	**	**	**

ASME BPE	Abmessung dimension	A	B	C	D	STERI-line®			HQ-line®	
						MB	K400	e-pol.	K400	e-pol.
DN 1/2"	12.7 x 1.65	XXX	XXX	XXX	XXX	XXX	XXX	XXX	XXX	XXX
DN 3/4"	19.05 x 1.65	19.05	15.75	101.6	11.0	702731	708165	708172	707118	707119
DN 1"	25.4 x 1.65	25.4	22.1	108.0	14.2	702725	708166	708173	707120	707121
DN 1 1/2"	38.1 x 1.65	38.1	34.8	120.6	21.1	702726	708167	708174	707122	707123
DN 2"	50.8 x 1.65	50.8	47.5	146.0	28.9	702728	708168	708175	707124	707125
DN 2 1/2"	63.5 x 1.65	63.5	60.2	158.8	35.3	702729	708169	708176	707126	707127
DN 3"	76.2 x 1.65	76.2	72.9	171.4	43.1	702730	708170	708177	707128	707129
DN 4"	101.6 x 2.11	101.6	97.38	209.6	56.8	704993	708171	708178	707130	707131
DN 6"	152.4 x 2.77	152.4	146.86	285.8	90.1	**	**	**	**	**

*) nicht in der DIN-Norm enthalten | non-standard

***) auf Anfrage | on request



5.3 STERI-TR® / HQ-TR® DIN 11865-T

Steril T-Stück -lang/reduziert-

aseptic tee -long/reduced-

Legende

- A Außendurchmesser (Durchgang)
- B Innendurchmesser (Durchgang)
- A1 Außendurchmesser (Abzweig)
- B1 Innendurchmesser (Abzweig)
- C Gesamtlänge
- D Länge Abgang

Abmessungen

- DIN 11866-A (DIN 11850)
- DIN 11866-B (EN ISO 1127)
- DIN 11866-C (ASME BPE)

Normative Verweisungen, Anforderungen / Abnahmen (Vormaterial)

- DIN 11865
- DIN 11866
- BN2
- EN 10088-1
- EN 10204
- ASTM A269 / A270
- ASME BPE
- ASME SA249/SA249M
- AD 2000-W2

Kennzeichnung

Hersteller, Werkstoff, Abmessung, Schmelze, DIN 11865

Toleranzen (Bezugsnorm)

DIN 11865 / EN ISO 1127

Verpackung









Schweißenden mit Kunststoffkappen verschlossen, einzeln verpackt.

Werkstoffe

1.4435

weitere Werkstoffe auf Anfrage

Oberflächenbeschaffenheit

	 MB H2 Ra > 0.8 µm	K400 H3o Ra < 0.8 µm	e-pol. HE3o Ra < 0.5-0.8 µm
innen metallblank			
innen geschliffen			
innen e-poliert			
außen metallblank			
außen geschliffen			

Key

- external diameter (main tube)
- internal diameter (main tube)
- external diameter (branch)
- internal diameter (branch)
- total length
- length of the branch

Dimensions

- DIN 11866-A (DIN 11850)
- DIN 11866-B (EN ISO 1127)
- DIN 11866-C (ASME BPE)

Normative References, Requirements / Approvals (raw material)

- DIN 11865
- DIN 11866
- BN2
- EN 10088-1
- EN 10204
- ASTM A269 / A270
- ASME BPE
- ASME SA249/SA249M
- AD 2000-W2

Marking

manufacturer, material, dimension, heat, DIN 11865

Tolerances (reference standard)

DIN 11865 / EN ISO 1127

Packaging







Welding ends covered with plastic caps, wrapped separately.

Materials

316L

further materials on request

Surface condition

	 K400 H4o Ra < 0.4 µm	e-pol. HE5o Ra < 0.25 µm
inside bright finish		
inside mech. polished		
inside e-polished		
outside bright finish		
outside mech. polished		

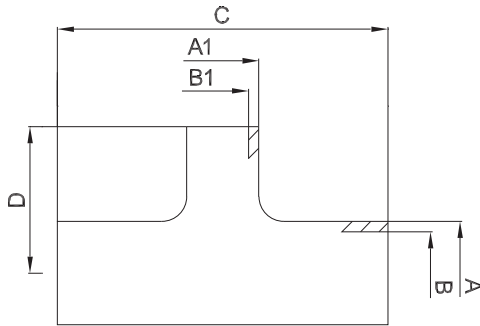


Oberflächenqualitäten | surface qualities

Innenoberfläche internal surface finish	(Zusatz-) Artikel-Nr. (additional) order No
Ra < 0.6 µm (STERI-line®)	999279
Ra < 0.5 µm (STERI-line®)	999280
Ra < 0.4 µm (HQ-line®)	999281
Ra < 0.25 µm (HQ-line®)	999283

Bestellbeispiel | ordering example

Artikelbezeichnung + Ausführungen article description + variants	Artikel-Nr. order No
STERI-TR® DN025/DN015 DIN (1.4435) aseptic tee -long/reduced- DIN 11865-T	702204
e-poliert e-polished	
Ra < 0.5 µm	+ 999280



weitere Abmessungen auf Anfrage | further dimensions on request

DIN	A	B	A1	B1	C	D	STERI-line®			HQ-line®
							MB	K400	e-pol.	
DN006/DN004*	8.0	6.0	6.0	4.0	60.0	30.0	711320	708490	711321	**
DN008/DN004*	10.0	8.0	6.0	4.0	60.0	30.0	711322	708491	711323	**
DN008/DN006	10.0	8.0	8.0	6.0	60.0	30.0	711324	708492	711325	**
DN010/DN006*	12.0	10.0	8.0	6.0	60.0	30.0	711326	706045	711327	**
DN010/DN006	13.0	10.0	8.0	6.0	60.0	30.0	711328	711329	711330	**
DN010/DN008*	12.0	10.0	10.0	8.0	60.0	30.0	711331	711332	711333	**
DN010/DN008	13.0	10.0	10.0	8.0	60.0	30.0	711334	711335	711336	**
DN015/DN006*	19.0	16.0	8.0	6.0	70.0	35.0	711337	708513	711338	**
DN015/DN008	19.0	16.0	10.0	8.0	70.0	35.0	711339	711340	711341	**
DN015/DN010*	19.0	16.0	12.0	10.0	70.0	35.0	705775	705776	705777	**
DN015/DN010	19.0	16.0	13.0	10.0	70.0	35.0	700527	701252	701253	**
DN020/DN010*	23.0	20.0	12.0	10.0	80.0	40.0	700531	701260	701261	**
DN020/DN010	23.0	20.0	13.0	10.0	80.0	40.0	706355	706356	706357	**
DN020/DN015	23.0	20.0	19.0	16.0	80.0	40.0	700533	701264	701265	**
DN025/DN010*	29.0	26.0	12.0	10.0	100.0	50.0	700535	702196	701269	**
DN025/DN010*	29.0	26.0	13.0	10.0	100.0	50.0	706359	706361	706360	**
DN025/DN015	29.0	26.0	19.0	16.0	100.0	50.0	702194	701268	702204	**
DN025/DN020	29.0	26.0	23.0	20.0	100.0	50.0	702245	702244	702246	**
DN032/DN010*	35.0	32.0	12.0	10.0	110.0	55.0	700537	701272	701273	**
DN032/DN010*	35.0	32.0	13.0	10.0	110.0	55.0	706363	706364	706365	**
DN032/DN015	35.0	32.0	19.0	16.0	110.0	55.0	702247	702254	702255	**
DN032/DN020	35.0	32.0	23.0	20.0	110.0	55.0	702250	702249	702248	**
DN032/DN025	35.0	32.0	29.0	26.0	110.0	55.0	702253	702251	702252	**
DN040/DN010*	41.0	38.0	12.0	10.0	120.0	60.0	702600	702601	702602	**
DN040/DN010*	41.0	38.0	13.0	10.0	120.0	60.0	706367	706368	706369	**
DN040/DN015*	41.0	38.0	19.0	16.0	120.0	60.0	700539	701276	701277	**
DN040/DN020	41.0	38.0	23.0	20.0	120.0	60.0	702280	702282	702281	**
DN040/DN025	41.0	38.0	29.0	26.0	120.0	60.0	702285	702283	702284	**
DN040/DN032	41.0	38.0	35.0	32.0	120.0	60.0	702286	702288	702287	**
DN050/DN010*	53.0	50.0	12.0	10.0	160.0	80.0	702936	702938	702937	**
DN050/DN010*	53.0	50.0	13.0	10.0	160.0	80.0	706371	706373	706372	**
DN050/DN015*	53.0	50.0	19.0	16.0	160.0	80.0	700541	701280	701281	**
DN050/DN020*	53.0	50.0	23.0	20.0	160.0	80.0	702289	702290	702291	**
DN050/DN025	53.0	50.0	29.0	26.0	160.0	80.0	702294	702293	702292	**
DN050/DN032	53.0	50.0	35.0	32.0	160.0	80.0	702296	702297	702298	**
DN050/DN040	53.0	50.0	41.0	38.0	160.0	80.0	702301	702300	702299	**
DN065/DN010*	70.0	66.0	13.0	10.0	210.0	80.0	711342	711343	711344	**
DN065/DN015*	70.0	66.0	19.0	16.0	210.0	80.0	711345	708017	707979	**
DN065/DN020*	70.0	66.0	23.0	20.0	210.0	80.0	700543	701284	701285	**
DN065/DN025*	70.0	66.0	29.0	26.0	210.0	80.0	702330	702332	702331	**
DN065/DN032	70.0	66.0	35.0	32.0	210.0	80.0	702334	702333	702335	**
DN065/DN040	70.0	66.0	41.0	38.0	210.0	80.0	702336	702338	702337	**

*) nicht in der DIN-Norm enthalten | non-standard

***) auf Anfrage | on request



5.3 STERI-TR® / HQ-TR® DIN 11865-T

zusätzliche Oberflächenqualitäten analog Seite | additional surface qualities analog page 113

DIN	A	B	A1	B1	C	D	STERI-line®			HQ-line®
							MB	K400	e-pol.	
DN065/DN050	70.0	66.0	53.0	50.0	210.0	80.0	702341	702339	702340	**
DN080/DN010*	85.0	81.0	13.0	10.0	260.0	105.0	711346	709290	709291	**
DN080/DN015*	85.0	81.0	19.0	16.0	260.0	105.0	711347	705630	711348	**
DN080/DN020*	85.0	81.0	23.0	20.0	260.0	105.0	711349	711350	711351	**
DN080/DN025*	85.0	81.0	29.0	26.0	260.0	105.0	702853	709538	709539	**
DN080/DN032*	85.0	81.0	35.0	32.0	260.0	105.0	700545	701288	701289	**
DN080/DN040	85.0	81.0	41.0	38.0	260.0	105.0	702342	702343	702344	**
DN080/DN050	85.0	81.0	53.0	50.0	260.0	105.0	702347	702346	702345	**
DN080/DN065	85.0	81.0	70.0	66.0	260.0	105.0	702348	702349	702350	**
DN100/DN010*	104.0	100.0	13.0	10.0	310.0	130.0	711352	709294	709295	**
DN100/DN015*	104.0	100.0	19.0	16.0	310.0	130.0	704930	704931	711353	**
DN100/DN020*	104.0	100.0	23.0	20.0	310.0	130.0	700529	702214	702185	**
DN100/DN025*	104.0	100.0	29.0	26.0	310.0	130.0	702216	701256	702215	**
DN100/DN032*	104.0	100.0	35.0	32.0	310.0	130.0	702201	702203	702202	**
DN100/DN040*	104.0	100.0	41.0	38.0	310.0	130.0	702205	702206	702207	**
DN100/DN050	104.0	100.0	53.0	50.0	310.0	130.0	702182	702208	702209	**
DN100/DN065	104.0	100.0	70.0	66.0	310.0	130.0	702210	702211	702186	**
DN100/DN080	104.0	100.0	85.0	81.0	310.0	130.0	702212	702213	701257	**
DN125/DN065	129.0	125.0	70.0	66.0	375.0	155.0	711354	711355	711356	**
DN125/DN080	129.0	125.0	85.0	81.0	375.0	155.0	711357	711358	711359	**
DN125/DN100	129.0	125.0	104.0	100.0	375.0	155.0	711360	711361	711362	**
DN150/DN080	154.0	150.0	85.0	81.0	450.0	187.5	711363	711364	711365	**
DN150/DN100	154.0	150.0	104.0	100.0	450.0	187.5	711366	711367	711368	**
DN150/DN125	154.0	150.0	129.0	125.0	450.0	187.5	711369	711370	711371	**
DN200/DN100	204.0	200.0	104.0	100.0	600.0	225.0	711372	711373	711374	**
DN200/DN125	204.0	200.0	129.0	125.0	600.0	225.0	711375	711376	711377	**
DN200/DN150	204.0	200.0	154.0	150.0	600.0	225.0	711378	711379	711380	**

*) nicht in der DIN-Norm enthalten | non-standard

**) auf Anfrage | on request

ISO	A	B	A1	B1	C	D	STERI-line®			HQ-line®
							MB	K400	e-pol.	
DN010/DN008	17.2	14.0	13.5	10.3	68.0	34.0	700530	702198	702197	**
DN015/DN008	21.3	18.1	13.5	10.3	72.0	36.0	700532	701262	701263	**
DN015/DN010	21.3	18.1	17.2	14.0	72.0	36.0	700528	701254	701255	**
DN020/DN008	26.9	23.7	13.5	10.3	110.0	55.0	700534	701266	701267	**
DN020/DN010	26.9	23.7	17.2	14.0	110.0	55.0	702229	702230	702231	**
DN020/DN015	26.9	23.7	21.3	18.1	110.0	55.0	702234	702233	702232	**
DN025/DN008*	33.7	29.7	13.5	10.3	120.0	60.0	700536	701270	701271	**
DN025/DN010	33.7	29.7	17.2	14.0	120.0	60.0	702235	702236	702237	**
DN025/DN015	33.7	29.7	21.3	18.1	120.0	60.0	702240	702239	702238	**
DN025/DN020	33.7	29.7	26.9	23.7	120.0	60.0	702241	702242	702243	**
DN032/DN008*	42.4	38.4	13.5	10.3	130.0	65.0	700538	701274	701275	**
DN032/DN010*	42.4	38.4	17.2	14.0	130.0	65.0	702256	702258	702257	**
DN032/DN015	42.4	38.4	21.3	18.1	130.0	65.0	702261	702259	702260	**
DN032/DN020	42.4	38.4	26.9	23.7	130.0	65.0	702262	702263	702264	**
DN032/DN025	42.4	38.4	33.7	29.7	130.0	65.0	702265	702267	702266	**
DN040/DN008*	48.3	44.3	13.5	10.3	130.0	65.0	704026	706270	708662	**
DN040/DN010*	48.3	44.3	17.2	14.0	130.0	65.0	702279	701278	701279	**
DN040/DN015*	48.3	44.3	21.3	18.1	130.0	65.0	702268	702270	702269	**
DN040/DN020	48.3	44.3	26.9	23.7	130.0	65.0	702273	702271	702272	**
DN040/DN025	48.3	44.3	33.7	29.7	130.0	65.0	702274	702276	702275	**
DN040/DN032	48.3	44.3	42.4	38.4	130.0	65.0	700540	702277	702278	**
DN050/DN008*	60.3	56.3	13.5	10.3	180.0	90.0	704944	708228	713547	**
DN050/DN010*	60.3	56.3	17.2	14.0	180.0	90.0	703018	711582	709174	**
DN050/DN015*	60.3	56.3	21.3	18.1	180.0	90.0	700542	701282	701283	**



ISO	A	B	A1	B1	C	D	STERI-line®			HQ-line®
							MB	K400	e-pol.	
DN050/DN020*	60.3	56.3	26.9	23.7	180.0	90.0	702303	702304	702305	**
DN050/DN025	60.3	56.3	33.7	29.7	180.0	90.0	702308	702307	702306	**
DN050/DN032	60.3	56.3	42.4	38.4	180.0	90.0	702309	702310	702311	**
DN050/DN040	60.3	56.3	48.3	44.3	180.0	90.0	702314	702313	702312	**
DN065/DN008*	76.1	72.1	13.5	10.3	220.0	90.0	708650	708651	708652	**
DN065/DN010*	76.1	72.1	17.2	14.0	220.0	90.0	708653	708654	708655	**
DN065/DN015*	76.1	72.1	21.3	18.1	220.0	90.0	700544	701286	701287	**
DN065/DN020*	76.1	72.1	26.9	23.7	220.0	90.0	702315	702317	702316	**
DN065/DN025*	76.1	72.1	33.7	29.7	220.0	90.0	702320	702318	702319	**
DN065/DN032	76.1	72.1	42.4	38.4	220.0	90.0	702321	702323	702322	**
DN065/DN040	76.1	72.1	48.3	44.3	220.0	90.0	702324	702328	702326	**
DN065/DN050	76.1	72.1	60.3	56.3	220.0	90.0	702325	702329	702327	**
DN080/DN008*	88.9	84.3	13.5	10.3	260.0	110.0	711722	708026	711723	**
DN080/DN010*	88.9	84.3	17.2	14.0	260.0	110.0	711724	706015	711725	**
DN080/DN015*	88.9	84.3	21.3	18.1	260.0	110.0	711726	705623	711727	**
DN080/DN020*	88.9	84.3	26.9	23.7	260.0	110.0	711728	705055	711729	**
DN080/DN025*	88.9	84.3	33.7	29.7	260.0	110.0	700546	701290	701291	**
DN080/DN032*	88.9	84.3	42.4	38.4	260.0	110.0	702351	702353	702352	**
DN080/DN040	88.9	84.3	48.3	44.3	260.0	110.0	702362	702354	702355	**
DN080/DN050	88.9	84.3	60.3	56.3	260.0	110.0	702358	702357	702356	**
DN080/DN065	88.9	84.3	76.1	72.1	260.0	110.0	702359	702361	702360	**
DN100/DN008*	114.3	109.7	13.5	10.3	320.0	130.0	711730	711731	711732	**
DN100/DN010*	114.3	109.7	17.2	14.0	320.0	130.0	710562	710563	710564	**
DN100/DN015*	114.3	109.7	21.3	18.1	320.0	130.0	710565	710566	710567	**
DN100/DN020*	114.3	109.7	26.9	23.7	320.0	130.0	710568	710569	710570	**
DN100/DN025*	114.3	109.7	33.7	29.7	320.0	130.0	702200	702187	702227	**
DN100/DN032*	114.3	109.7	42.4	38.4	320.0	130.0	702222	701258	702228	**
DN100/DN040*	114.3	109.7	48.3	44.3	320.0	130.0	702219	702217	702218	**
DN100/DN050	114.3	109.7	60.3	56.3	320.0	130.0	702183	702220	702221	**
DN100/DN065	114.3	109.7	76.1	72.1	320.0	130.0	702224	702223	702188	**
DN100/DN080	114.3	109.7	88.9	84.3	320.0	130.0	702226	702225	701259	**
DN125/DN065	139.7	134.5	76.1	72.1	400.0	160.0	711733	711734	711735	**
DN125/DN080	139.7	134.5	88.9	84.3	400.0	160.0	711736	711737	711738	**
DN125/DN100	139.7	134.5	114.3	109.7	400.0	160.0	711739	711740	711741	**
DN150/DN080	168.3	163.1	88.9	84.3	500.0	200.0	711742	711743	711744	**
DN150/DN100	168.3	163.1	114.3	109.7	500.0	200.0	704428	711745	711746	**
DN150/DN125	168.3	163.1	139.7	134.5	500.0	200.0	711747	711748	711749	**
DN200/DN100	219.1	213.9	114.3	109.7	600.0	250.0	711750	711751	711752	**
DN200/DN125	219.1	213.9	139.7	134.5	600.0	250.0	711753	711754	711755	**
DN200/DN150	219.1	213.9	168.3	163.1	600.0	250.0	711756	711757	711758	**

*) nicht in der DIN-Norm enthalten | non-standard

**) auf Anfrage | on request



5.3 STERI-TR® / HQ-TR® DIN 11865-T

zusätzliche Oberflächenqualitäten analog Seite | additional surface qualities analog page 113

ASME BPE	A	B	A1	B1	C	D	STERI-line®			HQ-line®
							MB	K400	e-pol.	
DN 3/8"/DN 1/4"	9.53	7.75	6.35	4.57	89.0	44.5	711759	711760	711761	**
DN 1/2"/DN 1/4"	12.7	9.4	6.35	4.57	95.2	47.6	711762	711763	711764	**
DN 1/2"/DN 3/8"	12.7	9.4	9.53	7.75	95.2	47.6	711765	711766	711767	**
DN 3/4"/DN 3/8"	19.05	15.75	9.53	7.75	101.6	50.8	711768	711769	711770	**
DN 3/4"/DN 1/2"	19.05	15.75	12.7	9.4	101.6	50.8	703475	705789	705790	**
DN 1"/DN 3/8"*	25.4	22.1	9.53	7.75	108.0	54.0	709300	711771	711772	**
DN 1"/DN 1/2"	25.4	22.1	12.7	9.4	108.0	54.0	705791	704422	705674	**
DN 1"/DN 3/4"	25.4	22.1	19.05	15.75	108.0	54.0	705792	705707	705678	**
DN 1 1/2"/DN 1/2"*	38.1	34.8	12.7	9.4	120.6	60.3	702811	704419	705793	**
DN 1 1/2"/DN 3/4"	38.1	34.8	19.05	15.75	120.6	60.3	704437	705794	705679	**
DN 1 1/2"/DN 1"	38.1	34.8	25.4	22.1	120.6	60.3	702815	705795	705680	**
DN 2"/DN 1/2"*	50.8	47.5	12.7	9.4	146.0	66.7	705643	709502	711773	**
DN 2"/DN 3/4"*	50.8	47.5	19.05	15.75	146.0	66.7	704485	705796	705706	**
DN 2"/DN 1"	50.8	47.5	25.4	22.1	146.0	66.7	702817	705797	705681	**
DN 2"/DN 1 1/2"	50.8	47.5	38.1	34.8	146.0	66.7	702813	705798	705705	**
DN 2 1/2"/DN 1/2"*	63.5	60.2	12.7	9.4	158.8	73.0	705644	705799	705800	**
DN 2 1/2"/DN 3/4"*	63.5	60.2	19.05	15.75	158.8	73.0	705645	705801	705802	**
DN 2 1/2"/DN 1"*	63.5	60.2	25.4	22.1	158.8	73.0	705803	705804	705682	**
DN 2 1/2"/DN 1 1/2"	63.5	60.2	38.1	34.8	158.8	73.0	705805	705806	705683	**
DN 2 1/2"/DN 2"	63.5	60.2	50.8	47.5	158.8	73.0	705807	705808	705684	**
DN 3"/DN 1 1/2"	76.2	72.9	38.1	34.8	171.4	79.4	705809	705810	705811	**
DN 3"/DN 2"	76.2	72.9	50.8	47.5	171.4	79.4	705812	705813	705814	**
DN 3"/DN 2 1/2"	76.2	72.9	63.5	60.2	171.4	79.4	705815	705816	705817	**
DN 4"/DN 2"	101.6	97.38	50.8	47.5	209.6	98.4	705818	705819	705820	**
DN 4"/DN 2 1/2"	101.6	97.38	63.5	60.2	209.6	98.4	705821	705822	705823	**
DN 4"/DN 3"	101.6	97.38	76.2	72.9	209.6	98.4	705824	705825	705826	**
DN 6"/DN 4"	152.4	146.86	101.6	97.38	285.8	130.2	711774	711775	711776	**

*) nicht in der DIN-Norm enthalten | non-standard

**) auf Anfrage | on request



5.4 STERI-TKR® / HQ-TKR® DIN 11865-TK

Steril T-Stück -kurz/reduziert-

aseptic tee -short/reduced-

Legende

- A Außendurchmesser (Durchgang)
- B Innendurchmesser (Durchgang)
- A1 Außendurchmesser (Abzweig)
- B1 Innendurchmesser (Abzweig)
- C Gesamtlänge
- D Länge Abgang

Abmessungen

- DIN 11866-A (DIN 11850)
- DIN 11866-B (EN ISO 1127)
- DIN 11866-C (ASME BPE)

Normative Verweisungen, Anforderungen / Abnahmen (Vormaterial)

- DIN 11865
- DIN 11866
- BN2
- EN 10088-1
- EN 10204
- ASTM A269 / A270
- ASME BPE
- ASME SA249/SA249M
- AD 2000-W2

Kennzeichnung

Hersteller, Werkstoff, Abmessung, Schmelze,
DIN 11865

Toleranzen (Bezugsnorm)

DIN 11865 / EN ISO 1127

Verpackung

Schweißenden mit Kunststoffkappen verschlossen,
einzeln verpackt.

Werkstoffe

1.4435

weitere Werkstoffe auf Anfrage

Oberflächenbeschaffenheit

	STERI line	MB H2 Ra > 0.8 µm	K400 H3o Ra < 0.8 µm	e-pol. HE3o Ra < 0.5-0.8 µm
innen metallblank				
innen geschliffen				
innen e-poliert				
außen metallblank				
außen geschliffen				

Key

- external diameter (main tube)
- internal diameter (main tube)
- external diameter (branch)
- internal diameter (branch)
- total length
- length of the branch

Dimensions

- DIN 11866-A (DIN 11850)
- DIN 11866-B (EN ISO 1127)
- DIN 11866-C (ASME BPE)

Normative References, Requirements / Approvals (raw material)

- DIN 11865
- DIN 11866
- BN2
- EN 10088-1
- EN 10204
- ASTM A269 / A270
- ASME BPE
- ASME SA249/SA249M
- AD 2000-W2

Marking

manufacturer, material, dimension, heat,
DIN 11865

Tolerances (reference standard)

DIN 11865 / EN ISO 1127

Packaging

Welding ends covered with plastic caps,
wrapped separately.

Materials

316L

further materials on request

Surface condition

	HQ line	K400 H4o Ra < 0.4 µm	e-pol. HE5o Ra < 0.25 µm
inside bright finish			
inside mech. polished			
inside e-polished			
outside bright finish			
outside mech. polished			

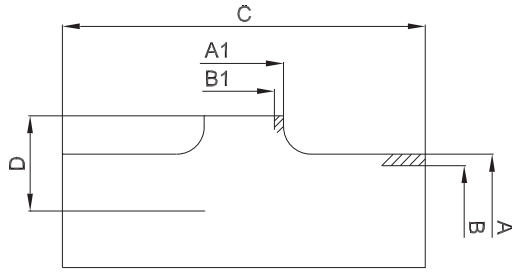


Oberflächenqualitäten | surface qualities

Innenoberfläche internal surface finish	(Zusatz-) Artikel-Nr. (additional) order No
Ra < 0.6 µm (STERI-line®)	999279
Ra < 0.5 µm (STERI-line®)	999280
Ra < 0.4 µm (HQ-line®)	999281
Ra < 0.25 µm (HQ-line®)	999283

Bestellbeispiel | ordering example

Artikelbezeichnung + Ausführungen article description + variants	Artikel-Nr. order No
HQ-TKR® DN025/015 DIN (1.4435) DIN 11865-TK aseptic tee -short/reduced-	708348
e-polier e-polished	
Ra < 0.4 µm	+ 999281



weitere Abmessungen auf Anfrage | further dimensions on request

DIN	A	B	A1	B1	C	D	STERI-line®			HQ-line®
							MB	K400	e-pol.	
DN015/DN008	19.0	16.0	10.0	8.0	70.0	11.0	711777	711778	711779	**
DN015/DN010	19.0	16.0	13.0	10.0	70.0	11.0	706354	708301	708344	**
DN020/DN008*	23.0	20.0	10.0	8.0	80.0	13.0	711780	711781	709531	**
DN020/DN010	23.0	20.0	13.0	10.0	80.0	13.0	706358	708302	708345	**
DN020/DN015	23.0	20.0	19.0	16.0	80.0	13.0	702739	708303	708346	**
DN025/DN008*	29.0	26.0	10.0	8.0	100.0	16.0	711782	711783	711784	**
DN025/DN010*	29.0	26.0	13.0	10.0	100.0	16.0	706362	708304	708058	**
DN025/DN015	29.0	26.0	19.0	16.0	100.0	16.0	702744	708305	708348	**
DN025/DN020	29.0	26.0	23.0	20.0	100.0	16.0	702746	708306	708207	**
DN032/DN008*	35.0	32.0	10.0	8.0	110.0	19.0	711785	711786	711787	**
DN032/DN010*	35.0	32.0	13.0	10.0	110.0	19.0	706366	708307	708057	**
DN032/DN015	35.0	32.0	19.0	16.0	110.0	19.0	702751	708308	708351	**
DN032/DN020	35.0	32.0	23.0	20.0	110.0	19.0	702753	708309	708352	**
DN032/DN025	35.0	32.0	29.0	26.0	110.0	19.0	702755	708310	708353	**
DN040/DN008*	41.0	38.0	10.0	8.0	120.0	22.0	706080	711788	711789	**
DN040/DN010*	41.0	38.0	13.0	10.0	120.0	22.0	706370	708311	708354	**
DN040/DN015*	41.0	38.0	19.0	16.0	120.0	22.0	702759	708312	708355	**
DN040/DN020	41.0	38.0	23.0	20.0	120.0	22.0	702761	708313	708356	**
DN040/DN025	41.0	38.0	29.0	26.0	120.0	22.0	702763	708314	708357	**
DN040/DN032	41.0	38.0	35.0	32.0	120.0	22.5	702765	708315	708358	**
DN050/DN008*	53.0	50.0	10.0	8.0	160.0	28.0	703175	711790	711791	**
DN050/DN010*	53.0	50.0	13.0	10.0	160.0	28.0	706374	708316	708359	**
DN050/DN015*	53.0	50.0	19.0	16.0	160.0	28.0	702767	708317	708360	**
DN050/DN020*	53.0	50.0	23.0	20.0	160.0	28.0	702769	708318	708361	**
DN050/DN025	53.0	50.0	29.0	26.0	160.0	28.0	702771	708319	708362	**
DN050/DN032	53.0	50.0	35.0	32.0	160.0	28.5	702773	708320	708363	**
DN050/DN040	53.0	50.0	41.0	38.0	160.0	29.0	702776	708321	708364	**
DN065/DN010*	70.0	66.0	13.0	10.0	210.0	37.0	706353	708322	708365	**
DN065/DN015*	70.0	66.0	19.0	16.0	210.0	37.0	706524	708323	708366	**
DN065/DN020*	70.0	66.0	23.0	20.0	210.0	37.0	702779	708324	708367	**
DN065/DN025*	70.0	66.0	29.0	26.0	210.0	37.0	702781	708325	708368	**
DN065/DN032	70.0	66.0	35.0	32.0	210.0	37.0	702783	708326	708369	**
DN065/DN040	70.0	66.0	41.0	38.0	210.0	37.5	702785	708327	708370	**
DN065/DN050	70.0	66.0	53.0	50.0	210.0	38.5	702787	708328	708371	**
DN080/DN010*	85.0	81.0	13.0	10.0	260.0	45.0	711792	709288	709289	**
DN080/DN015*	85.0	81.0	19.0	16.0	260.0	45.0	706881	708329	708372	**
DN080/DN020*	85.0	81.0	23.0	20.0	260.0	45.0	706775	708330	708373	**
DN080/DN025*	85.0	81.0	29.0	26.0	260.0	45.0	706741	708331	708374	**
DN080/DN032*	85.0	81.0	35.0	32.0	260.0	45.0	702790	708332	708375	**
DN080/DN040	85.0	81.0	41.0	38.0	260.0	45.0	702792	708333	708376	**
DN080/DN050	85.0	81.0	53.0	50.0	260.0	46.0	702794	708334	708377	**
DN080/DN065	85.0	81.0	70.0	66.0	260.0	47.5	702796	708335	708378	**

*) nicht in der DIN-Norm enthalten | non-standard

***) auf Anfrage | on request



5.4 STERI-TKR® / HQ-TKR® DIN 11865-TK

zusätzliche Oberflächenqualitäten analog Seite | additional surface qualities analog page 118

DIN	A	B	A1	B1	C	D	STERI-line®			HQ-line®
							MB	K400	e-pol.	
DN100/DN010*	104.0	100.0	13.0	10.0	310.0	55.5	711793	709292	709293	**
DN100/DN015*	104.0	100.0	19.0	16.0	310.0	55.5	704469	708336	708379	**
DN100/DN020*	104.0	100.0	23.0	20.0	310.0	55.5	702798	708337	708380	**
DN100/DN025*	104.0	100.0	29.0	26.0	310.0	55.5	702799	708338	708381	**
DN100/DN032*	104.0	100.0	35.0	32.0	310.0	55.5	702801	708339	708382	**
DN100/DN040*	104.0	100.0	41.0	38.0	310.0	55.5	702803	708340	708383	**
DN100/DN050	104.0	100.0	53.0	50.0	310.0	55.5	702805	708341	708384	**
DN100/DN065	104.0	100.0	70.0	66.0	310.0	57.0	702807	708342	708385	**
DN100/DN080	104.0	100.0	85.0	81.0	310.0	57.0	702809	708343	708386	**
DN125/DN065	129.0	125.0	70.0	66.0	375.0	69.5	711794	711795	711796	**
DN125/DN080	129.0	125.0	85.0	81.0	375.0	69.5	711797	711798	711799	**
DN125/DN100	129.0	125.0	104.0	100.0	375.0	70.5	711800	711801	711802	**
DN150/DN080	154.0	150.0	85.0	81.0	450.0	99.0	711803	711804	711805	**
DN150/DN100	154.0	150.0	104.0	100.0	450.0	100.0	711806	711807	711808	**
DN150/DN125	154.0	150.0	129.0	125.0	450.0	103.0	711809	711810	711811	**
DN200/DN100	204.0	200.0	104.0	100.0	600.0	108.0	711812	711813	711814	**
DN200/DN125	204.0	200.0	129.0	125.0	600.0	111.5	711815	711816	711817	**
DN200/DN150	204.0	200.0	154.0	150.0	600.0	115.0	711818	711819	711820	**

*) nicht in der DIN-Norm enthalten | non-standard

**) auf Anfrage | on request

ISO	A	B	A1	B1	C	D	STERI-line®			HQ-line®
							MB	K400	e-pol.	
DN010/DN008	17.2	14.0	13.5	10.3	68.0	10.1	702732	708387	708436	**
DN015/DN008	21.3	18.1	13.5	10.3	72.0	12.2	702733	708388	708437	**
DN015/DN010	21.3	18.1	17.2	14.0	72.0	12.2	702735	708389	708438	**
DN020/DN008	26.9	23.7	13.5	10.3	110.0	15.0	702736	708390	708439	**
DN020/DN010	26.9	23.7	17.2	14.0	110.0	15.0	702738	708391	708440	**
DN020/DN015	26.9	23.7	21.3	18.1	110.0	15.0	702740	708392	708441	**
DN025/DN008*	33.7	29.7	13.5	10.3	120.0	18.4	702741	708393	708442	**
DN025/DN010	33.7	29.7	17.2	14.0	120.0	18.4	702743	708394	708443	**
DN025/DN015	33.7	29.7	21.3	18.1	120.0	18.4	702745	708395	708444	**
DN025/DN020	33.7	29.7	26.9	23.7	120.0	18.4	702747	708396	708445	**
DN032/DN008*	42.4	38.4	13.5	10.3	130.0	22.7	702748	708397	708446	**
DN032/DN010*	42.4	38.4	17.2	14.0	130.0	22.7	702750	707275	708447	**
DN032/DN015	42.4	38.4	21.3	18.1	130.0	22.7	702752	708398	708448	**
DN032/DN020	42.4	38.4	26.9	23.7	130.0	22.7	702754	708399	708449	**
DN032/DN025	42.4	38.4	33.7	29.7	130.0	22.7	702756	708400	708450	**
DN040/DN008*	48.3	44.3	13.5	10.3	130.0	25.7	703529	708401	708451	**
DN040/DN010*	48.3	44.3	17.2	14.0	130.0	25.7	702758	708402	708452	**
DN040/DN015*	48.3	44.3	21.3	18.1	130.0	25.7	702760	708403	708453	**
DN040/DN020	48.3	44.3	26.9	23.7	130.0	25.7	702762	708404	708454	**
DN040/DN025	48.3	44.3	33.7	29.7	130.0	25.7	702764	708405	708455	**
DN040/DN032	48.3	44.3	42.4	38.4	130.0	26.2	702766	708406	708456	**
DN050/DN008*	60.3	56.3	13.5	10.3	180.0	31.7	703019	708407	708457	**
DN050/DN010*	60.3	56.3	17.2	14.0	180.0	31.7	703815	708408	708458	**
DN050/DN015*	60.3	56.3	21.3	18.1	180.0	31.7	702768	708409	708459	**
DN050/DN020*	60.3	56.3	26.9	23.7	180.0	31.7	702770	708410	708460	**
DN050/DN025	60.3	56.3	33.7	29.7	180.0	31.7	702772	708411	708461	**
DN050/DN032	60.3	56.3	42.4	38.4	180.0	32.2	702775	708412	708462	**
DN050/DN040	60.3	56.3	48.3	44.3	180.0	32.7	702777	708413	708463	**
DN065/DN008*	76.1	72.1	13.5	10.3	220.0	40.1	705964	708414	708464	**
DN065/DN010*	76.1	72.1	17.2	14.0	220.0	40.1	708347	705963	708465	**
DN065/DN015*	76.1	72.1	21.3	18.1	220.0	40.1	702778	708415	708466	**
DN065/DN020*	76.1	72.1	26.9	23.7	220.0	40.1	702780	708416	708467	**



ISO	A	B	A1	B1	C	D	STERI-line®			HQ-line®
							MB	K400	e-pol.	
DN065/DN025*	76.1	72.1	33.7	29.7	220.0	40.1	702782	708417	708468	**
DN065/DN032	76.1	72.1	42.4	38.4	220.0	40.1	702784	708418	708469	**
DN065/DN040	76.1	72.1	48.3	44.3	220.0	40.6	702786	708419	708470	**
DN065/DN050	76.1	72.1	60.3	56.3	220.0	41.6	702788	708420	708471	**
DN080/DN008*	88.9	84.3	13.5	10.3	260.0	47.0	711821	709241	709075	**
DN080/DN010*	88.9	84.3	17.2	14.0	260.0	47.0	711822	711823	711824	**
DN080/DN015*	88.9	84.3	21.3	18.1	260.0	47.0	708349	708421	706778	**
DN080/DN020*	88.9	84.3	26.9	23.7	260.0	47.0	708350	706779	708472	**
DN080/DN025*	88.9	84.3	33.7	29.7	260.0	47.0	702789	708422	708473	**
DN080/DN032*	88.9	84.3	42.4	38.4	260.0	47.0	702791	708423	708474	**
DN080/DN040	88.9	84.3	48.3	44.3	260.0	47.0	702793	708424	708475	**
DN080/DN050	88.9	84.3	60.3	56.3	260.0	48.0	702795	708425	708476	**
DN080/DN065	88.9	84.3	76.1	72.1	260.0	49.5	702797	708426	708477	**
DN100/DN008*	114.3	109.7	13.5	10.3	320.0	60.7	711825	711826	711827	**
DN100/DN010*	114.3	109.7	17.2	14.0	320.0	60.7	707856	708427	707859	**
DN100/DN015*	114.3	109.7	21.3	18.1	320.0	60.7	707857	708428	707860	**
DN100/DN020*	114.3	109.7	26.9	23.7	320.0	60.7	707858	708429	707861	**
DN100/DN025*	114.3	109.7	33.7	29.7	320.0	60.7	702800	708430	708478	**
DN100/DN032*	114.3	109.7	42.4	38.4	320.0	60.7	702802	708431	708479	**
DN100/DN040*	114.3	109.7	48.3	44.3	320.0	60.7	702804	708432	708480	**
DN100/DN050	114.3	109.7	60.3	56.3	320.0	60.7	702806	708433	708481	**
DN100/DN065	114.3	109.7	76.1	72.1	320.0	62.2	702808	708434	708482	**
DN100/DN080	114.3	109.7	88.9	84.3	320.0	62.2	702810	708435	708483	**
DN125/DN065	139.7	134.5	76.1	72.1	400.0	74.9	711828	711829	708989	**
DN125/DN080	139.7	134.5	88.9	84.3	400.0	74.9	711830	711831	708990	**
DN125/DN100	139.7	134.5	114.3	109.7	400.0	75.9	711832	711833	708991	**
DN150/DN080	168.3	163.1	88.9	84.3	500.0	89.2	711834	711835	709070	**
DN150/DN100	168.3	163.1	114.3	109.7	500.0	90.2	707980	711836	711837	**
DN150/DN125	168.3	163.1	139.7	134.5	500.0	94.2	711838	711839	711840	**
DN200/DN100	219.1	213.9	114.3	109.7	600.0	115.6	711841	711842	711843	**
DN200/DN125	219.1	213.9	139.7	134.5	600.0	119.6	711844	711845	711846	**
DN200/DN150	219.1	213.9	168.3	163.1	600.0	122.6	711847	711848	711849	**

ASME BPE	A	B	A1	B1	C	D	STERI-line®			HQ-line®
							MB	K400	e-pol.	
DN ¾"/DN ½"	19.05	15.75	12.7	9.4	101.6	11.0	703237	708545	708566	**
DN 1"/DN ½"	25.4	22.1	12.7	9.4	108.0	14.2	703435	708546	708567	**
DN 1"/DN ¾"	25.4	22.1	19.05	15.75	108.0	14.2	704571	708547	708568	**
DN 1½"/DN ½"*	38.1	34.8	12.7	9.4	120.6	20.6	702812	708548	708569	**
DN 1½"/DN ¾"	38.1	34.8	19.05	15.75	120.6	20.6	703463	708549	708570	**
DN 1½"/DN 1"	38.1	34.8	25.4	22.1	120.6	20.6	702816	708550	708571	**
DN 2"/DN ½"*	50.8	47.5	12.7	9.4	146.0	26.9	703434	708551	708572	**
DN 2"/DN ¾"*	50.8	47.5	19.05	15.75	146.0	26.9	703433	708552	708573	**
DN 2"/DN 1"	50.8	47.5	25.4	22.1	146.0	26.9	702818	708553	708574	**
DN 2"/DN 1½"	50.8	47.5	38.1	34.8	146.0	27.4	702814	708554	708575	**
DN 2½"/DN ¾"*	63.5	60.2	19.05	15.75	158.8	33.8	706448	708556	708577	**
DN 2½"/DN 1"*	63.5	60.2	25.4	22.1	158.8	33.8	704573	708557	708578	**
DN 2½"/DN 1½"	63.5	60.2	38.1	34.8	158.8	33.8	704574	708558	708579	**
DN 2½"/DN 2"	63.5	60.2	50.8	47.5	158.8	35.3	704576	708559	708580	**
DN 3"/DN 1½"	76.2	72.9	38.1	34.8	171.4	40.1	705827	708560	708581	**
DN 3"/DN 2"	76.2	72.9	50.8	47.5	171.4	41.6	705828	708561	708582	**
DN 3"/DN 2½"	76.2	72.9	63.5	60.2	171.4	41.6	705829	708562	708583	**
DN 4"/DN 2"	101.6	97.38	50.8	47.5	209.6	54.3	705830	708563	708584	**
DN 4"/DN 2½"	101.6	97.38	63.5	60.2	209.6	54.3	705831	708564	708585	**
DN 4"/DN 3"	101.6	97.38	76.2	72.9	209.6	55.8	705832	708565	708586	**
DN 6"/DN 4"	152.4	146.86	101.6	97.38	285.8	83.1	711854	711855	711856	**



5.5 MEDI-T® DIN 11852-TS

Hygiene T-Stück -lang/egal-

hygienic tee -long/equal-

Legende

- A Außendurchmesser
- B Innendurchmesser
- C Gesamtlänge
- C/2 Länge Abgang

Abmessungen

DIN 11866-A (DIN 11850)

Normative Verweisungen, Anforderungen / Abnahmen (Vormaterial)

- DIN 11850
- DIN 11852
- EN 10088-1
- EN 10204

Kennzeichnung

Hersteller, Werkstoff, Abmessung, Schmelze

Toleranzen (Bezugsnorm)

DIN 11852 / ISO 2768-1

Verpackung

einzelnd verpackt

auf Wunsch:

Schweißenden mit Kunststoffkappen verschlossen

Werkstoffe

1.4404

weitere Werkstoffe auf Anfrage

Oberflächenbeschaffenheit ("MB/MB")

- innen: metallblank, gebeizt
(Vormaterial: Ra < 0.8/1.6 µm)
- außen: metallblank

Key

- external diameter
- internal diameter
- total length
- length of the branch

Dimensions

DIN 11866-A (DIN 11850)

Normative References, Requirements / Approvals (raw material)

- DIN 11850
- DIN 11852
- EN 10088-1
- EN 10204

Marking

manufacturer, material, dimension, heat

Tolerances (reference standard)

DIN 11852 / ISO 2768-1

Packaging

wrapped separately

on demand:

welding ends covered with plastic caps

Materials

316L

further materials on request

Surface condition ("MB/MB")

- inside: bright finish, pickled
(raw-material: Ra < 0.8/1.6 µm)
- outside: bright finish

MB/MB Innen- und Außenoberfläche unbearbeitet | raw internal and external surface finish

MB/K400 Innenoberfläche unbearbeitet, außen geschliffen K400 | raw internal surface, outside mech. polished K400

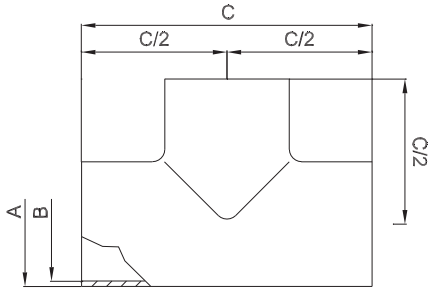


Oberflächenqualitäten | surface qualities

Innenoberfläche internal surface finish	(Zusatz-) Artikel-Nr. (additional) order No
e-polieret e-polished	999277
Ra < 0.8 µm (STERI-line®)	999284
Ra < 0.6 µm (STERI-line®)	999279
Ra < 0.5 µm (STERI-line®)	999280
Ra < 0.4 µm (HQ-line®)	999281
Ra < 0.25 µm (HQ-line®)	999283

Bestellbeispiel | ordering example

Artikelbezeichnung + Ausführungen article description + variants	Artikel-Nr. order No
MEDI-T® DN025 DIN (1.4404) DIN 11852-TS hygienic tee -long/equal-	703126
innen geschliffen mech. polished inside	+ 999284
Ra < 0.8 µm	



weitere Abmessungen auf Anfrage | further dimensions on request

DIN	Abmessung dimension	A	B	C	C/2		MB/MB 1.4404	MB/K400 1.4404		
DN010	13.0 x 1.5	13.0	10.0	70.0	35.0		705387	703822		
DN015	19.0 x 1.5	19.0	16.0	70.0	35.0		702885	708863		
DN020	23.0 x 1.5	23.0	20.0	80.0	40.0		704425	708864		
DN025	29.0 x 1.5	29.0	26.0	100.0	50.0		703126	708865		
DN032	35.0 x 1.5	35.0	32.0	110.0	55.0		703771	708866		
DN040	41.0 x 1.5	41.0	38.0	120.0	60.0		702852	708867		
DN050	53.0 x 1.5	53.0	50.0	140.0	70.0		703767	708868		
DN065	70.0 x 2.0	70.0	66.0	160.0	80.0		703770	708869		
DN080	85.0 x 2.0	85.0	81.0	180.0	90.0		703768	708870		
DN100	104.0 x 2.0	104.0	100.0	200.0	100.0		703769	708871		
DN125	129.0 x 2.0	129.0	125.0	375.0	187.5		703166	708872		
DN150	154.0 x 2.0	154.0	150.0	450.0	225.0		705389	708873		
DN200	204.0 x 2.0	204.0	200.0	600.0	300.0		711141	711142		

reduzierte T-Stücke sind ebenfalls erhältlich
reduced tees are also available





5.6 MEDI-TK® DIN11852-TK

Hygiene T-Stück -kurz/egal-

hygienic tee -short/equal-

Legende

- A Außendurchmesser
- B Innendurchmesser
- C Gesamtlänge
- D Länge Abgang

Abmessungen

DIN 11866-A (DIN 11850)

Normative Verweisungen, Anforderungen / Abnahmen (Vormaterial)

DIN 11850
 DIN 11852
 EN 10088-1
 EN 10204

Kennzeichnung

Hersteller, Werkstoff, Abmessung, Schmelze

Toleranzen (Bezugsnorm)

DIN 11852 / ISO 2768-1

Verpackung

einzelnd verpackt

auf Wunsch:

Schweißenden mit Kunststoffkappen verschlossen

Werkstoffe

1.4404

weitere Werkstoffe auf Anfrage

Oberflächenbeschaffenheit ("MB/MB")

innen: metallblank, gebeizt
 (Vormaterial: Ra < 0.8/1.6 µm)
 außen: metallblank

Key

- external diameter
- internal diameter
- total length
- length of the branch

Dimensions

DIN 11866-A (DIN 11850)

Normative References, Requirements / Approvals (raw material)

DIN 11850
 DIN 11852
 EN 10088-1
 EN 10204

Marking

manufacturer, material, dimension, heat

Tolerances (reference standard)

DIN 11852 / ISO 2768-1

Packaging

wrapped separately

on demand:

welding ends covered with plastic caps

Materials

316L

further materials on request

Surface condition ("MB/MB")

inside: bright finish, pickled
 (raw-material: Ra < 0.8/1.6 µm)
 outside: bright finish

MB/MB Innen- und Außenoberfläche unbearbeitet | raw internal and external surface finish

MB/K400 Innenoberfläche unbearbeitet, außen geschliffen K400 | raw internal surface, outside mech. polished K400

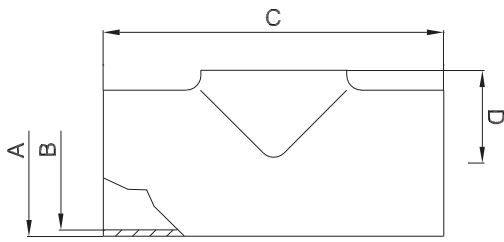


Oberflächenqualitäten | surface qualities

Innenoberfläche internal surface finish	(Zusatz-) Artikel-Nr. (additional) order No
e-polier e-polished	999277
Ra < 0.8 µm (STERI-line®)	999284
Ra < 0.6 µm (STERI-line®)	999279
Ra < 0.5 µm (STERI-line®)	999280
Ra < 0.4 µm (HQ-line®)	999281
Ra < 0.25 µm (HQ-line®)	999283

Bestellbeispiel | ordering example

Artikelbezeichnung + Ausführungen article description + variants	Artikel-Nr. order No
MEDI-TK® DN025 DIN (1.4404) DIN 11852-TK, außen K400 hygienic tee -short/equal-, outside polished K400	711130
e-polier e-polished	+ 999277
Ra < 0.6 µm	+ 999279



weitere Abmessungen auf Anfrage | further dimensions on request

DIN	Abmessung dimension	A	B	C	D		MB/MB 1.4404	MB/K400 1.4404		
DN010	13.0 x 1.5	XXX	XXX	XXX	XXX		XXX	XXX		
DN015	19.0 x 1.5	19.0	16.0	70.0	11.0		702835	711128		
DN020	23.0 x 1.5	23.0	20.0	80.0	13.0		702956	711129		
DN025	29.0 x 1.5	29.0	26.0	100.0	16.0		702996	711130		
DN032	35.0 x 1.5	35.0	32.0	110.0	19.5		703022	711131		
DN040	41.0 x 1.5	41.0	38.0	120.0	23.0		703067	711132		
DN050	53.0 x 1.5	53.0	50.0	140.0	30.0		702945	711133		
DN065	70.0 x 2.0	70.0	66.0	160.0	40.0		702955	711134		
DN080	85.0 x 2.0	85.0	81.0	180.0	47.5		704249	711135		
DN100	104.0 x 2.0	104.0	100.0	200.0	58.0		705060	711136		
DN125	129.0 x 2.0	129.0	125.0	375.0	74.0		705385	711137		
DN150	154.0 x 2.0	154.0	150.0	450.0	90.0		705386	711138		
DN200	204.0 x 2.0	204.0	200.0	600.0	115.0		711140	711139		

reduzierte T-Stücke sind ebenfalls erhältlich
reduced tees are also available





5.7 STERI-Cross® / HQ-Cross®

Steril Kreuz-Stück -lang/egal-

aseptic cross piece -long/equal-

Legende

- A Außendurchmesser
- B Innendurchmesser
- C Gesamtlänge
- C/2 Länge Abgang

Abmessungen

- DIN 11866-A (DIN 11850)
- DIN 11866-B (EN ISO 1127)
- DIN 11866-C (ASME BPE)

Normative Verweisungen, Anforderungen / Abnahmen (Vormaterial)

- DIN 11866
- BN2
- EN 10204
- EN 10088-1
- ASTM A269 / A270
- ASME BPE
- ASME SA249/SA249M
- AD 2000-W2

Kennzeichnung

Hersteller, Werkstoff, Abmessung, Schmelze

Toleranzen (Bezugsnorm)

EN ISO 1127

Verpackung









Schweißenden mit Kunststoffkappen verschlossen, einzeln verpackt.

Werkstoffe

1.4435

weitere Werkstoffe auf Anfrage

Oberflächenbeschaffenheit

		MB H2 Ra > 0.8 µm	K400 H3o Ra < 0.8 µm	e-pol. HE3o Ra < 0.5-0.8 µm
innen metallblank				
innen geschliffen				
innen e-poliert				
außen metallblank				
außen geschliffen				

Key

- external diameter
- internal diameter
- total length
- length of the branch

Dimensions

- DIN 11866-A (DIN 11850)
- DIN 11866-B (EN ISO 1127)
- DIN 11866-C (ASME BPE)

Normative References, Requirements / Approvals (raw material)

- DIN 11866
- BN2
- EN 10204
- EN 10088-1
- ASTM A269 / A270
- ASME BPE
- ASME SA249/SA249M
- AD 2000-W2

Marking

manufacturer, material, dimension, heat

Tolerances (reference standard)

EN ISO 1127

Packaging







Welding ends covered with plastic caps, wrapped separately.

Materials

316L

further materials on request

Surface condition

		K400 H4o Ra < 0.4 µm	e-pol. HE5o Ra < 0.25 µm
inside bright finish			
inside mech. polished			
inside e-polished			
outside bright finish			
outside mech. polished			

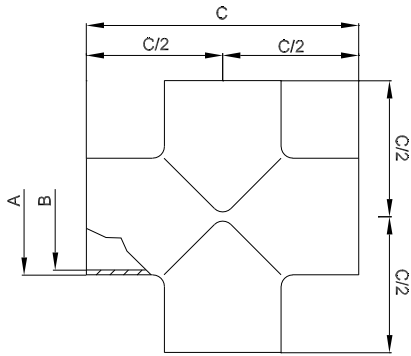


Oberflächenqualitäten | surface qualities

Innenoberfläche internal surface finish	(Zusatz-) Artikel-Nr. (additional) order No
Ra < 0.6 µm (STERI-line®)	999279
Ra < 0.5 µm (STERI-line®)	999280
Ra < 0.4 µm (HQ-line®)	999281
Ra < 0.25 µm (HQ-line®)	999283

Bestellbeispiel | ordering example

Artikelbezeichnung + Ausführungen article description + variants	Artikel-Nr. order No
STERI-Cross® DN025 ISO (1.4435) aseptic cross piece -long/equal-	705931
e-poliert e-polished	
Ra < 0.6 µm	+ 999279



weitere Abmessungen auf Anfrage | further dimensions on request

DIN	Abmessung dimension	A	B	C	C/2	STERI-line®			HQ-line®
						MB	K400	e-pol.	
DN006	8.0 x 1.0	8.0	6.0	60.0	30.0	707743	707744	707745	*
DN008	10.0 x 1.0	10.0	8.0	60.0	30.0	707746	707747	707748	*
DN010	12.0 x 1.0	12.0	10.0	70.0	35.0	705876	705900	705901	*
DN010	13.0 x 1.5	13.0	10.0	70.0	35.0	705877	705902	705903	*
DN015	19.0 x 1.5	19.0	16.0	70.0	35.0	704968	705904	705905	*
DN020	23.0 x 1.5	23.0	20.0	80.0	40.0	703460	705906	705907	*
DN025	29.0 x 1.5	29.0	26.0	100.0	50.0	702921	705908	705909	*
DN032	35.0 x 1.5	35.0	32.0	110.0	55.0	703032	705910	705911	*
DN040	41.0 x 1.5	41.0	38.0	120.0	60.0	702994	705912	705913	*
DN050	53.0 x 1.5	53.0	50.0	160.0	80.0	705878	705914	705915	*
DN065	70.0 x 2.0	70.0	66.0	210.0	105.0	705879	705916	705917	*
DN080	85.0 x 2.0	85.0	81.0	260.0	130.0	705880	705918	705919	*
DN100	104.0 x 2.0	104.0	100.0	310.0	155.0	705881	705920	705921	*

ISO	Abmessung dimension	A	B	C	C/2	STERI-line®			HQ-line®
						MB	K400	e-pol.	
DN008	13.5 x 1.6	13.5	10.3	64.0	32.0	704987	705922	705923	*
DN010	17.2 x 1.6	17.2	14.0	68.0	34.0	705882	705924	705925	*
DN015	21.3 x 1.6	21.3	18.1	72.0	36.0	705883	705926	705927	*
DN020	26.9 x 1.6	26.9	23.7	110.0	55.0	704112	705928	705929	*
DN025	33.7 x 2.0	33.7	29.7	120.0	60.0	704973	705930	705931	*
DN032	42.4 x 2.0	42.4	38.4	130.0	65.0	705884	705932	705933	*
DN040	48.3 x 2.0	48.3	44.3	130.0	65.0	704372	705934	705935	*
DN050	60.3 x 2.0	60.3	56.3	180.0	90.0	705885	705936	705937	*
DN065	76.1 x 2.0	76.1	72.1	220.0	110.0	705886	705938	705939	*
DN080	88.9 x 2.3	88.9	84.3	260.0	130.0	705887	705940	705941	*
DN100	114.3 x 2.3	114.3	109.7	320.0	160.0	705888	705942	705943	*

ASME BPE	Abmessung dimension	A	B	C	C/2	STERI-line®			HQ-line®
						MB	K400	e-pol.	
DN 1/2"	12.7 x 1.65	12.7	9.4	95.2	47.6	705889	705945	705946	*
DN 3/4"	19.05 x 1.65	19.05	15.75	101.6	50.8	705890	705947	705948	*
DN 1"	25.4 x 1.65	25.4	22.1	108.0	54.0	704500	705949	705950	*
DN 1 1/2"	38.1 x 1.65	38.1	34.8	120.6	60.3	705891	705951	705952	*
DN 2"	50.8 x 1.65	50.8	47.5	146.0	73.0	703598	705953	705954	*
DN 2 1/2"	63.5 x 1.65	63.5	60.2	158.8	79.4	705892	705955	705956	*
DN 3"	76.2 x 1.65	76.2	72.9	171.4	85.7	705893	705957	705958	*
DN 4"	101.6 x 2.11	101.6	97.38	209.6	104.8	705894	705959	705960	*

*) auf Anfrage | on request

 reduzierte Kreuz-Stücke sind ebenfalls lieferbar
 reduced cross pieces are consignable too




5.8 STERI-Cross® K / HQ-Cross® K

Steril Kreuz-Stück -kurz/egal-

aseptic cross piece -short/equal-

Legende

- A Außendurchmesser
- B Innendurchmesser
- C Gesamtlänge
- D Länge Abgang

Abmessungen

- DIN 11866-A (DIN 11850)
- DIN 11866-B (EN ISO 1127)
- DIN 11866-C (ASME BPE)

Normative Verweisungen, Anforderungen / Abnahmen (Vormaterial)

- DIN 11866
- BN2
- EN 10088-1
- EN 10204
- ASTM A269 / A270
- ASME BPE
- ASME SA249/SA249M
- AD 2000-W2

Kennzeichnung

Hersteller, Werkstoff, Abmessung, Schmelze

Toleranzen (Bezugsnorm)

EN ISO 1127

Verpackung









Schweißenden mit Kunststoffkappen verschlossen, einzeln verpackt.

Werkstoffe

1.4435

weitere Werkstoffe auf Anfrage

Oberflächenbeschaffenheit

		MB H2 Ra > 0.8 µm	K400 H3o Ra < 0.8 µm	e-pol. HE3o Ra < 0.5-0.8 µm
innen metallblank				
innen geschliffen				
innen e-polier				
außen metallblank				
außen geschliffen				

Key

- external diameter
- internal diameter
- total length
- length of the branch

Dimensions

- DIN 11866-A (DIN 11850)
- DIN 11866-B (EN ISO 1127)
- DIN 11866-C (ASME BPE)

Normative References, Requirements / Approvals (raw material)

- DIN 11866
- BN2
- EN 10088-1
- EN 10204
- ASTM A269 / A270
- ASME BPE
- ASME SA249/SA249M
- AD 2000-W2

Marking

manufacturer, material, dimension, heat

Tolerances (reference standard)

EN ISO 1127

Packaging




Welding ends covered with plastic caps, wrapped separately.

Materials

316L

further materials on request

Surface condition

		K400 H4o Ra < 0.4 µm	e-pol. HE5o Ra < 0.25 µm
inside bright finish			
inside mech. polished			
inside e-polished			
outside bright finish			
outside mech. polished			

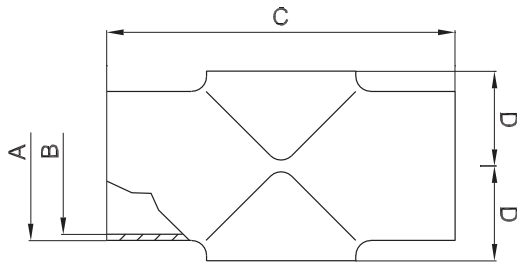


Oberflächenqualitäten | surface qualities

Innenoberfläche internal surface finish	(Zusatz-) Artikel-Nr. (additional) order No
Ra < 0.6 µm (STERI-line®)	999279
Ra < 0.5 µm (STERI-line®)	999280
Ra < 0.4 µm (HQ-line®)	999281
Ra < 0.25 µm (HQ-line®)	999283

Bestellbeispiel | ordering example

Artikelbezeichnung + Ausführungen article description + variants	Artikel-Nr. order No
STERI-Cross® K DN025 ISO (1.4435) aseptic cross piece -short/equal-	709755
e-polier e-polished	
Ra < 0.5 µm	+ 999280



weitere Abmessungen auf Anfrage | further dimensions on request

DIN	Abmessung dimension	A	B	C	D	STERI-line®			HQ-line®
						MB	K400	e-pol.	
DN010	12.0 x 1.0	12.0	10.0	70.0	7.5	705850	711857	711858	*
DN010	13.0 x 1.5	XXX	XXX	XXX	XXX	XXX	XXX	XXX	*
DN015	19.0 x 1.5	19.0	16.0	70.0	11.0	702984	709782	709939	*
DN020	23.0 x 1.5	23.0	20.0	80.0	13.0	702834	711859	711860	*
DN025	29.0 x 1.5	29.0	26.0	100.0	16.0	702929	709044	709299	*
DN032	35.0 x 1.5	35.0	32.0	110.0	19.5	703916	711861	711862	*
DN040	41.0 x 1.5	41.0	38.0	120.0	23.0	703532	711863	709302	*
DN050	53.0 x 1.5	53.0	50.0	160.0	30.0	705852	711864	711865	*
DN065	70.0 x 2.0	70.0	66.0	210.0	40.0	705853	711866	711867	*
DN080	85.0 x 2.0	85.0	81.0	260.0	47.5	705854	711868	711869	*
DN100	104.0 x 2.0	104.0	100.0	310.0	58.0	705855	711870	711871	*

ISO	Abmessung dimension	A	B	C	D	STERI-line®			HQ-line®
						MB	K400	e-pol.	
DN008	13.5 x 1.6	XXX	XXX	XXX	XXX	XXX	XXX	XXX	*
DN010	17.2 x 1.6	17.2	14.0	68.0	10.1	705857	711872	711699	*
DN015	21.3 x 1.6	21.3	18.1	72.0	12.2	702907	711873	711874	*
DN020	26.9 x 1.6	26.9	23.7	110.0	15.0	705858	711875	711876	*
DN025	33.7 x 2.0	33.7	29.7	120.0	18.4	711877	703093	709755	*
DN032	42.4 x 2.0	42.4	38.4	130.0	23.2	711878	703092	709051	*
DN040	48.3 x 2.0	48.3	44.3	130.0	26.7	703096	711879	711880	*
DN050	60.3 x 2.0	60.3	56.3	180.0	33.7	705859	711881	711882	*
DN065	76.1 x 2.0	76.1	72.1	220.0	43.1	705860	711883	711884	*
DN080	88.9 x 2.3	88.9	84.3	260.0	49.5	704148	711885	711886	*
DN100	114.3 x 2.3	114.3	109.7	320.0	63.2	705861	711887	711888	*

ASME BPE	Abmessung dimension	A	B	C	D	STERI-line®			HQ-line®
						MB	K400	e-pol.	
DN 1/2"	12.7 x 1.65	XXX	XXX	XXX	XXX	XXX	XXX	XXX	*
DN 3/4"	19.05 x 1.65	19.05	15.75	101.6	11.0	705863	711889	711890	*
DN 1"	25.4 x 1.65	25.4	22.1	108.0	14.2	704501	711891	711892	*
DN 1 1/2"	38.1 x 1.65	38.1	34.8	120.6	21.1	705864	711893	711894	*
DN 2"	50.8 x 1.65	50.8	47.5	146.0	28.9	705865	711895	711896	*
DN 2 1/2"	63.5 x 1.65	63.5	60.2	158.8	35.3	705866	711897	711898	*
DN 3"	76.2 x 1.65	76.2	72.9	171.4	43.1	705867	711899	711900	*
DN 4"	101.6 x 2.11	101.6	97.38	209.6	56.8	705868	711901	711902	*

*) auf Anfrage | on request


 reduzierte Kreuz-Stücke sind ebenfalls lieferbar
 reduced cross pieces are consignable too